



Each product radiates glossiness and whiteness



Use of finest raw materials - purified, tested and certified by R&D



Use of advanced German technology with fully computerized controlled shuttled kiln



Use of eco-friendly natural gas residues for better shine and luster



Production process according to ISI, ISO and European standard



High-tempered firing with hygiene-friendly production process



Water-saving flushing system with 3/6-litre knobs



Soft closing seat cover

## WEL COME

For years, the Sanitaryware markets have been selling the same kinds of products. With a theme of Freshness in the mind and a zeal to be ahead of the market, **SONET CERAMIC** is presenting the CATALOGUE with FRESH DESIGNS.





*Designer* Table Top



## Torus

Size : 415x340x170mm



## Table Top



Torus - **Metalic**



Torus - **5001**



Torus - **5003**



Torus - **5010**



Torus - **5011**

**New Torus**

Size : 510x340x180mm





## Table Top



New Torus - **10003**



New Torus - **10044**



New Torus - **10045**

**Viva**

Size : 510x315x130mm





## Table Top



Viva - 4006



Viva - 4004

## Wash Basin



### Niki

Size : 410x410x185mm



Niki - **2021** P. Green



Niki - **2041**

## Table Top



**Linea**

Size : 410x410x110mm



Linea - **001**



Linea - **002**



## Wall Hung Basin



### Leo

Size : 425x310x140mm



Leo - 12003

## Wall Hung Basin



### Sandy

Size : 485x310x250mm



Sandy - **11003**



Sandy - **11006**

## Table Top



### Limca

Size : 470x385x140mm (19"x15")



Limca - **19003**



## Wall Hung Basin



### Solid

Size : 360x455x100mm (14"x18")



Solid - 001



Solid - 002

## Angel

Size : 610x340x135mm



## Table Top



Angel - **8001**



Angel - **8002**



Angel - **8003**



Angel - **8004**



## Wall Hung Basin



### **Bolo**

Size : 400x400x140mm  
250x485x250mm



Bolo - **3003**

## Wall Hung Basin & Table Top



### Sonata-S2

Size : 490x490x220mm



**Sonata with Stand**

Size : 380x380x220mm  
Stand Size : 250x485x250mm

## Wall Hung Basin



### Balti

Size : 350x450x220mm



Balti - 111



Balti - 112



## Table Top



### Sogo

Bowl Size : 400x400x210mm  
Stand Size : 250x465x250mm



Sogo - **7001**



Sogo - **7003**

## Vento

Size : 405x405x150mm



## Table Top



Vento - 121



Vento - 122



Vento - 123



Vento - 124



Vento - 125



## Table Top



**Prius**

Size : 440x440x150mm



Prius - **161**

Table Top



Beetle

Size : 590x410x120mm



Beetle - 132



Beetle - 131

## Flora-154

Size : 400x400x180mm





## Table Top



Flora - **151**



Flora - **152**



Flora - **153**

**Bolo**

Size : 400x400x140mm



## Table Top



Bolo - **Bamboo**



Bolo - **Metalic Copper**



New Bolo - **Metalic Black**



New Bolo - **3012**



New Bolo - **3013**



New Bolo - **3014**





**Light Weight  
161**



**Lara-161**



Size : 480x480x160mm

## Table Top



**Cello**

Size : 620x460x150mm



Cello - **141**







*Designer* Wash Basin Pedestal

## Premium Series



RP - 1021



RP - 1041



RP - 1051



RP - 1043

## Premium Series



RP - 1029



RP - 1048



RP - 1045



RP - 1054



## Premium Series



SR - 2041 AS-2041 E.W.C. P/S



SR - 2048



SR - 2045

## Premium Series



SR - 2044



SR - 2042



SR - 2047



SR - 2046

## Premium Series



Spenta - **4048**



Spenta - **4002**



Simin - **5002**



Simin - **5001**



## Premium Series



Dolfin - **DF 001**



Dolfin - **DF 002**



Dolfin - **DH 001**



Dolfin - **DT 002**

**Febia - FB 3011**







Premium Series

Febia Set - **FB 3012**



Febia Set - **FB 3013**



Febia Set - **FB 3014**



**Optra Set**  
(Luster)





Golden Series

OP - 502



PR - 503



PR - 504

# Printed & Rustic Series



PR - 104 (Blue)



PR - 104 (Red)

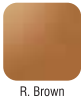


Prince Set - (Rustic)



Supreme - (Rustic)

Available Colours in Rustic



R. Brown



Co. Brown



Magenta



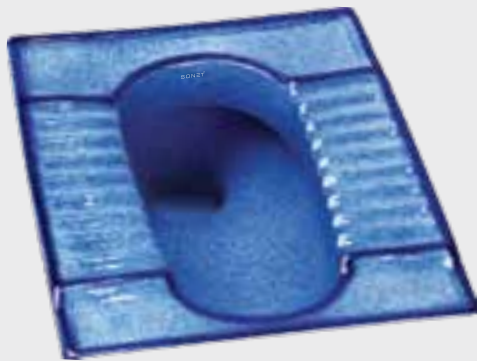
R. Black



P. Blue



## Rustic Pan



Orisa Pan - 20" (P.Blue)



CT Pan - 23" (R.Brown)



Orisa Pan - 20" (Black)



Italia Pan - 21" (Red)



Orisa Pan - 20" (Majenta)



Orisa Pan - 20" (A.Blue)

Accessories



Flat Channel

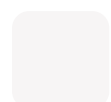
Size : 610x130x85mm (24")



# Color Range



## Running Colours \_\_\_\_\_



MILKY WHITE



T. BLUE



P. GREEN



PINK



P. IVORY



IVORY



GREY



RED BROWN

## Special Colours



MAGENTA



ALPINE BLUE

## Colour your dreams ....

White is the most used color in case of sanitation. It gives a soothing feeling of purity. It makes any room look bigger than it is. It speaks of the sober tastes of the owner. We have almost all colors available in the White color.

Plain Colors : The second family includes a wide range of colors to suite the kind of background imagined. Plain colors can be used as a matching or in contrast to the backdrop. More than 16 colors are available to satisfy your exclusivity needs. Do remember to be very sure of selecting the right backdrop before placing an order for our great range. We are sure you will be confused finalizing the color scheme... yes more than 16 to choose from.

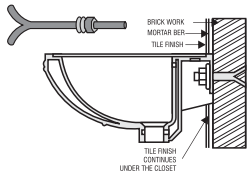
purely designer and unique only. The rustic range is available in high value pieces only. So go for it only if you are focused on big and beautiful.

### Note :

Above printed colours may differ from actual colours of sanitarywares because of printing limitation. For true selection, refer to actual sample or shade board.

Continuous innovation and improvement in manufacturing techniques and products are carried out regularly. We reserve the right to supply articles which may not correspond exactly with the particulars given in this catalogue.





## WALL HUNG BASIN

As per shown in the picture, the rag bolt must be grouted into the cement/concrete wall. The bolts must be fixed to the cement/concrete wall. Allow setting & checking than install it using nut and washer.

## COUNTER WASHBASIN

At the beginning

1. A skilled or experienced person should install counter lavatories.
2. Avoid using adhesive with this product.
3. Check the waste area and supply tubing if required.
4. Do not open the lavatory from its protective carton until you are ready for installation.
5. Please follow all local building and plumbing codes.



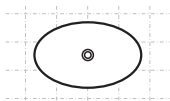
## MATERIAL & TOOLS

Measure tape, Keyhole or saber saw, Hammer, Glasses, Rags or Paper toweling, Drill (1/2 dia, drill bit or larger), Pencil, sealant, sharp knife or scissors.

## INSTALLATION OF LAVATORY

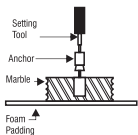
Please Note : Please install it in a way that future removal from underneath the counter top is possible without damaging the counter top.

1. Please check the desired location for clearance between the back splash, faucet, Fixture and cabinet.
2. Please cut the template.
3. Please carefully trace the template on the counter top directed.
4. Please mark the faucet hole centerline on the counter top.
5. Please drill a 1/2" pilot on the inside of the cut line.



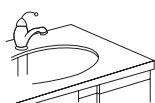
### For Wood Counter tops:

1. Mark and per-drill the wood screw holes at the locations shown on the template.
2. Waterproof any exposed areas of wood.



### For Marble Counter tops:

1. Position the counter top upside down on foam padding to protect the surface. Mark and drill 3/6" holes 5/8" deep at the locations shown on the template.
2. Use a setting tool and hammer to secure the anchors.



### For All Installations:

1. If the counter top has not been installed, install it at this time.
2. Drill the faucet holes according to the faucet installation instructions.
3. Install the faucet to the counter top according to the manufacture's instructions.
4. Install the drain to the lavatory according to the manufacture's instructions.

## MAINTENANCE

Like any other part of your house, the bathroom can be made to look great and made to last long if it is taken care of regularly. To make your bathroom beautiful here are some invaluable tips.

### Wash Basin :

A mild detergent can be used to wash the basin at least once a day. After washing, the basin should be wiped out clearly to avoid water stains.

### Closets :

Cleanser like Harpic can be used to clear the closet with soft plastic brush, at least once a day.

To avoid minute discoloring, after flushing the toilet give it a once over with the soft brush.

Keep the toilet brush handy in a convenient stand nearby.

In case of toilets and basins, if there has been no maintenance since long period of time, water deposits and discoloration can form on the surface of areas that get wet. In such cases, these stains/marks can be removed with the help of a solution of dilute hydrochloric acid.

Clean with a soft cotton cloth and warm water with soap.

Do not use thinner, day cleaning liquids or powder paste. Use a liquid cleaner at least twice a week.

Use brasso or car rubbing compound and then polish with a cloth to remove fine scratches.



the  
definition  
of  
luxury

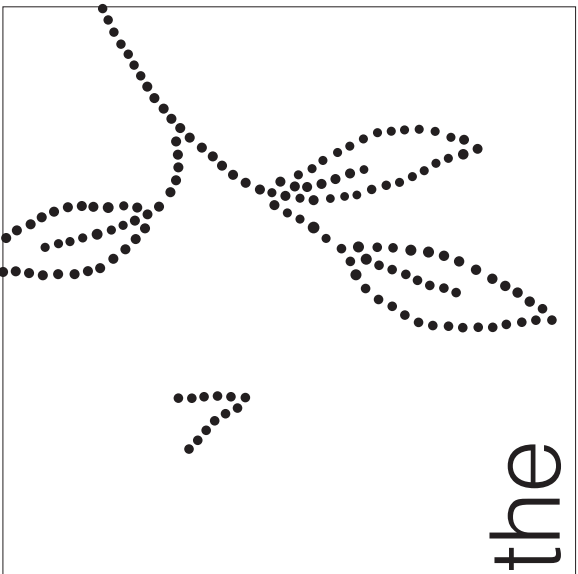


W : [www.soloceramics.com](http://www.soloceramics.com)  
E : [info@soloceramics.com](mailto:info@soloceramics.com)  
E : [soloceramics@gmail.com](mailto:soloceramics@gmail.com)

Yo...r Graphics Ph: 224570

[www.soloceramics.com](http://www.soloceramics.com)

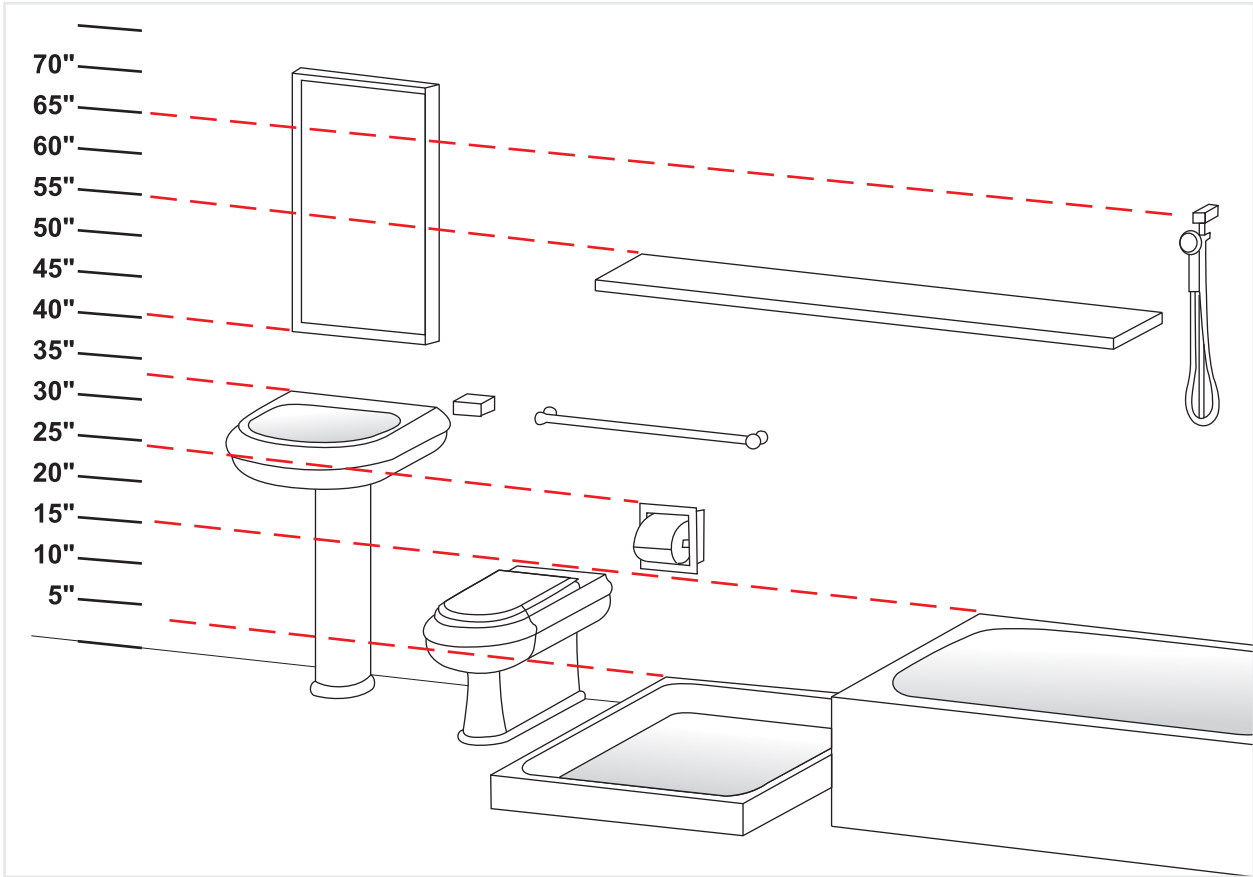








Sanitary ware & Accessories : Diagram of Heights (in Inches)



### TECHNICAL SPECIFICATION

	PERTICULARS	I.S.I REQUIREMENT	OUR VALUE
1	WATER ABSORPTION	0.50%	<0.20%
2	MODULUS OF RUPTURE (BREAKING STRENGTH)	600 KG/SQ.CM	650 TO 700 KG./SQ.CM
3	CRAZING RESISTANCE (STEAM PRESSURE OF 3.7 KG/SQ.CM FOR 4 HRS.)	NO CRAZING UPTO TWO CYCLES	NO CRAZING UPTO FOUR CYCLES
4	MINIMUM THICKNESS	SHOULD BE MINI. 6.0 mm AT ANY PLACE	MINI. 7 mm AT ANY PLACE
5	WARPAGE	THE APPLIANCE SHOULD NOT SHOW WARPAGE MORE THAN THE SPECIFIED LIMITS.	WARPAGE WELL WITHIN THE PERMISSIBLE LIMITS.
6	THICKNESS OF GLAZE AT NAY PLACE	NOT SPECIFIED	MINI. 400 MICRONS (THAT IS 0.4 mm)
7	SURFACE QUALITY	NO WAVY FINISH ON THE VISIBLE SURFACE	NO WAVY FINISH
8	DISCOLOURATION	NONE ON THE VISIBLE SURFACE	NONE ON THE VISIBLE SURFACE
9	RESISTANCE TO CHEMICALS	SHOULD BE RESISTANT TO ALL HOUSE HOLD CHEMICALS	PASSES
10	RESISTANCE TO STAINS AND BURNS.	NO STAIN SHOULD REMAIN ON TESTING	PASSES

**Note :** The data given above are tested by solo ceramic quality control department by the use of company's standard test method.